

The ribbons concerned by the above information can easily be identified thanks to the following symbol “///” printed at the end of the P/N.



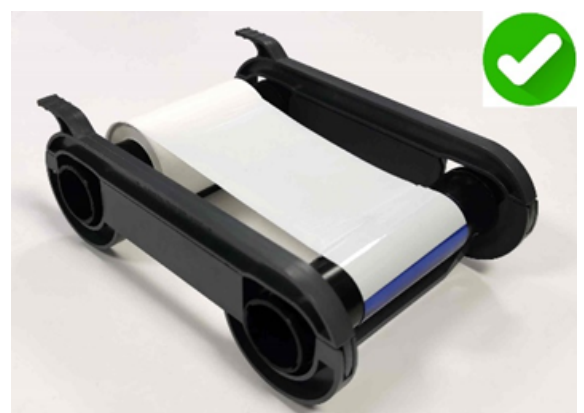
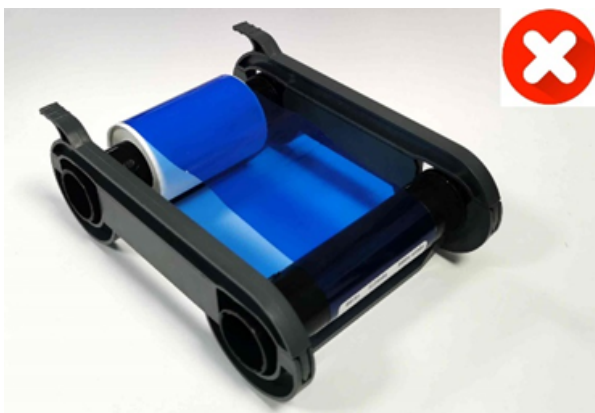
Some of the features are not available on those ribbon batches:

1. Ribbon remaining capacity and P/N are not detailed in the driver
2. Automatic recognition (the ribbon must be manually set in the driver's properties)

IMPORTANT INFORMATION FOR NEW RIBBON

Before using a new monochrome ribbon, it is necessary to roll up the ribbon slightly by hand so that the transparent/blue part of the film is no longer visible.

If this procedure is not followed correctly a “Ribbon cut or stuck on card” pop message may appear and stop printing.



For further information, do not hesitate to visit ribbons.evolis.com/update